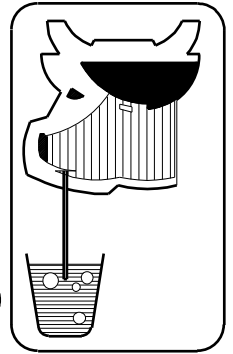




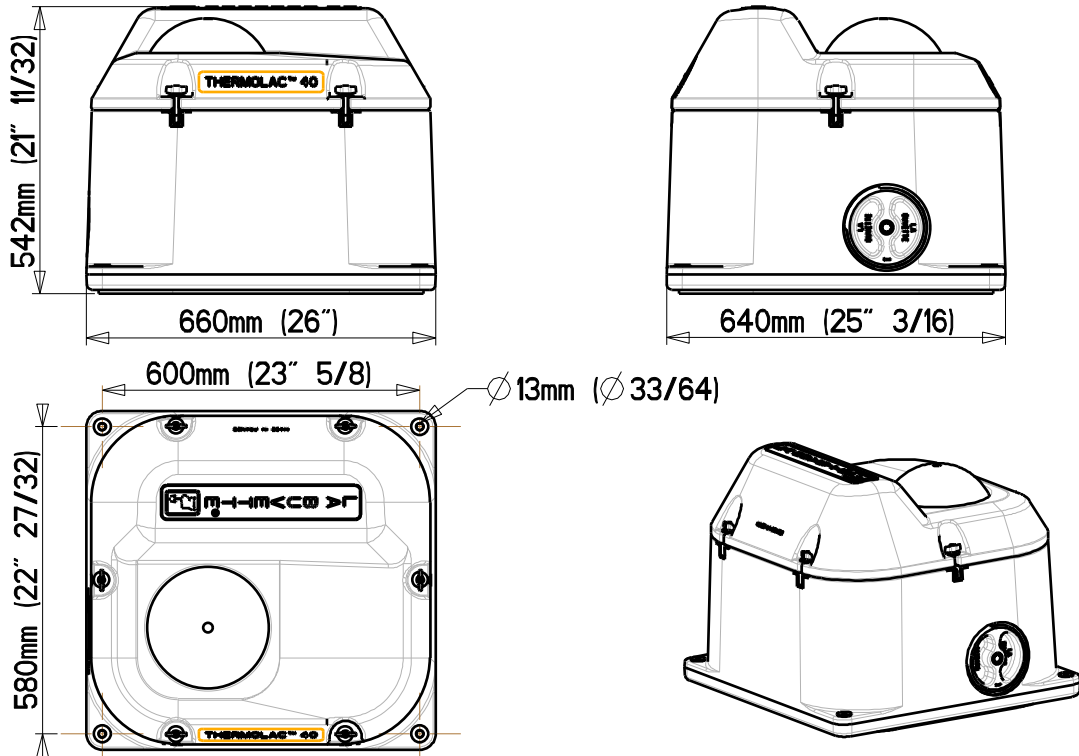
16-72 THERMOLAC™ 75 GV

16-71 THERMOLAC™ 40 GV

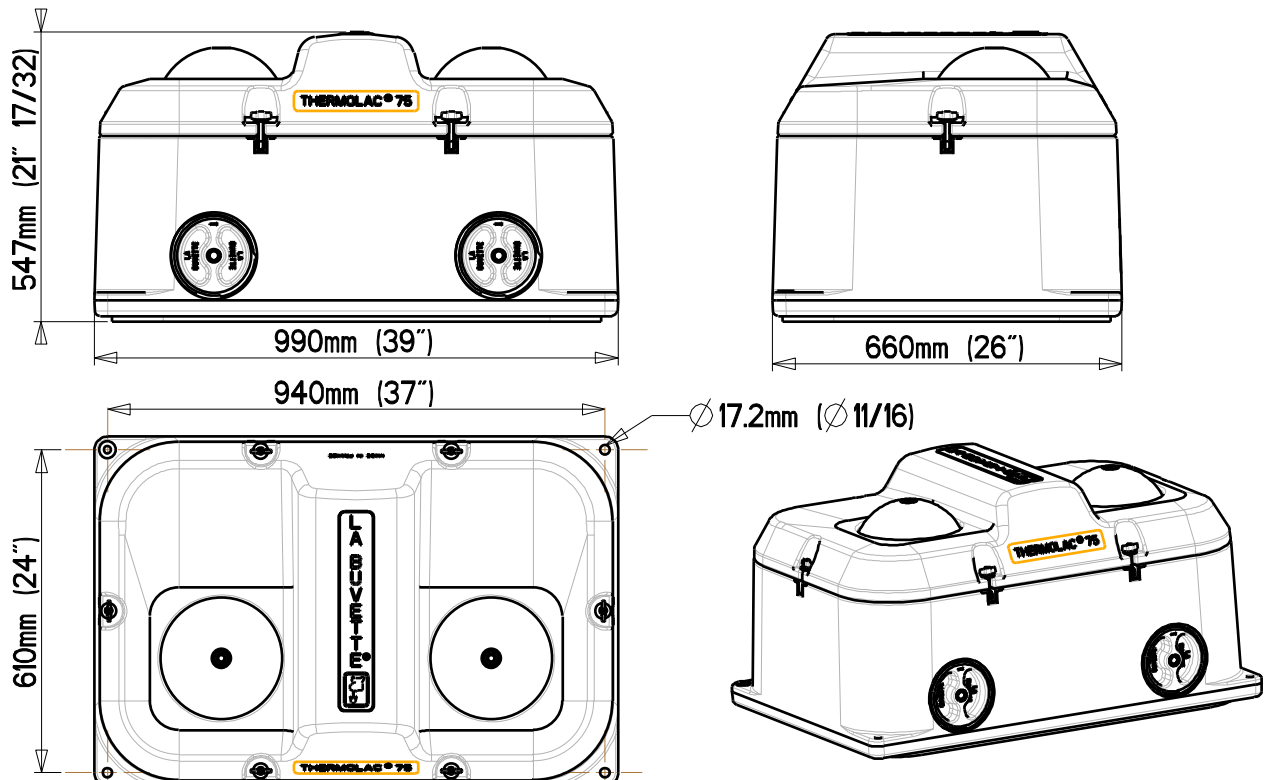
INTERNATIONAL PATENT PENDING n° 0753 250



THERMOLAC 40 GV :

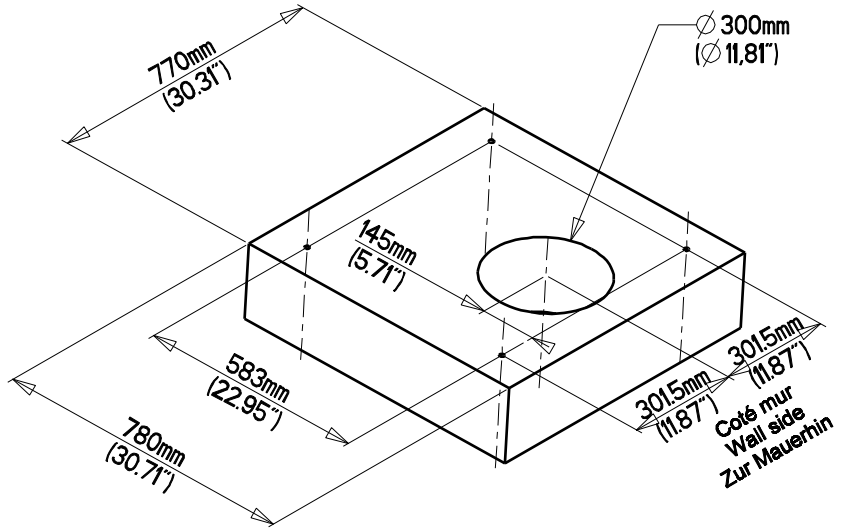
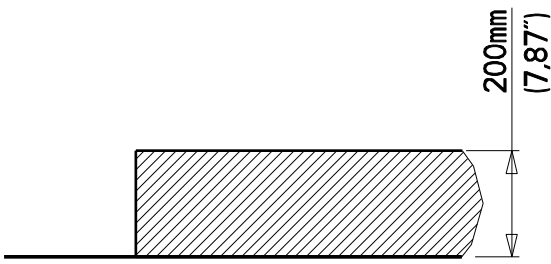


THERMOLAC 75 GV :

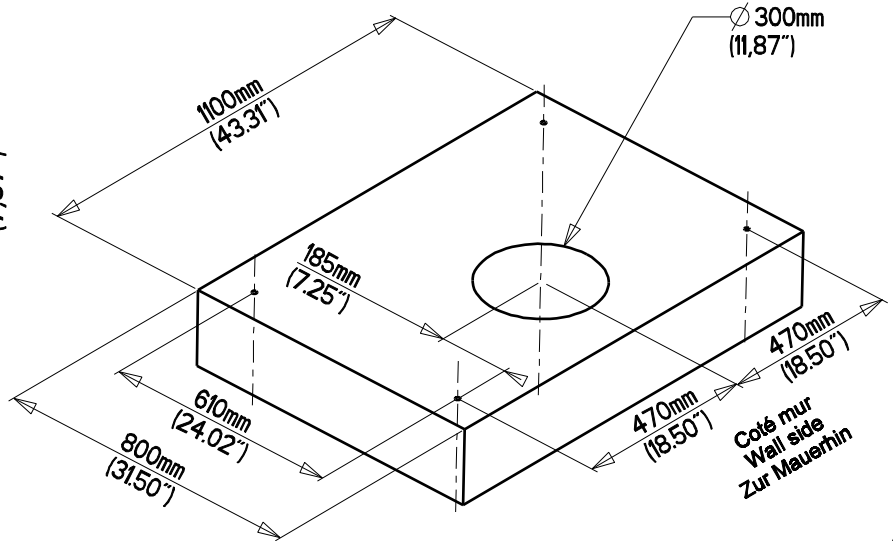
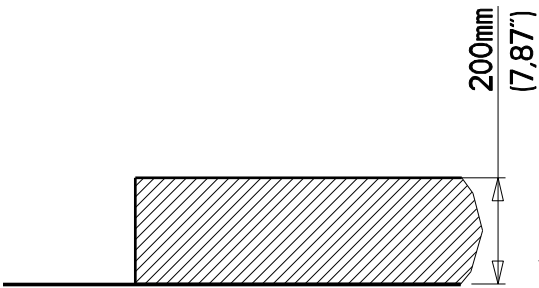


1

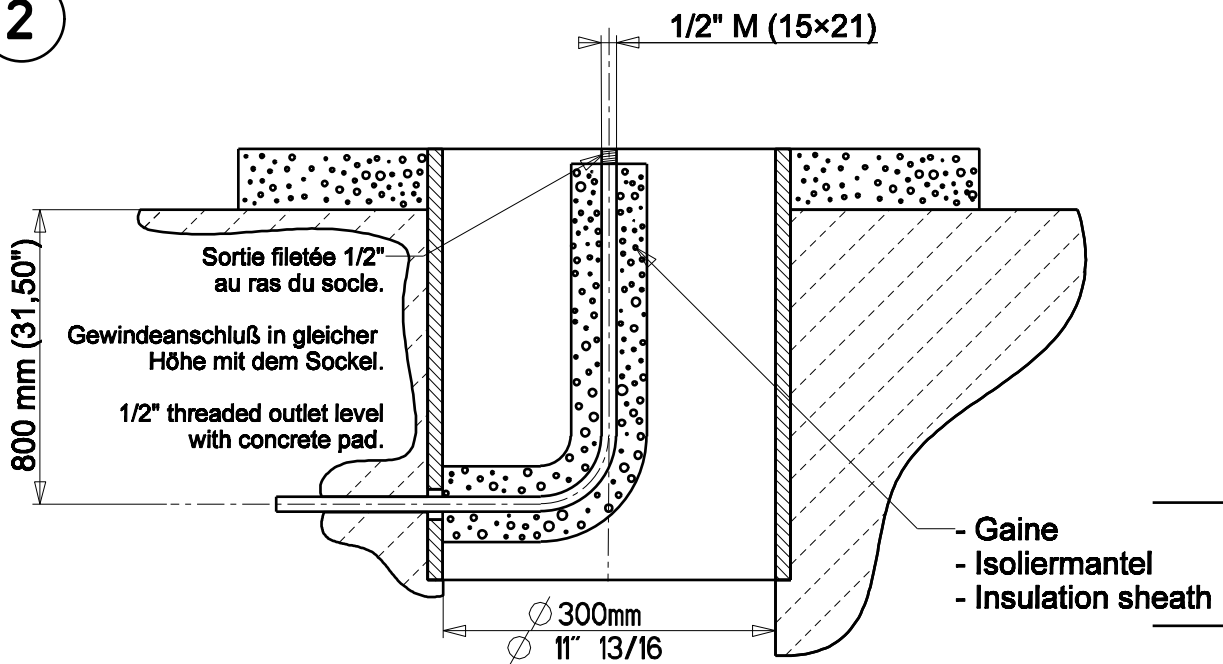
THERMOLAC™ 40 GV :



THERMOLAC™ 75 GV :



2



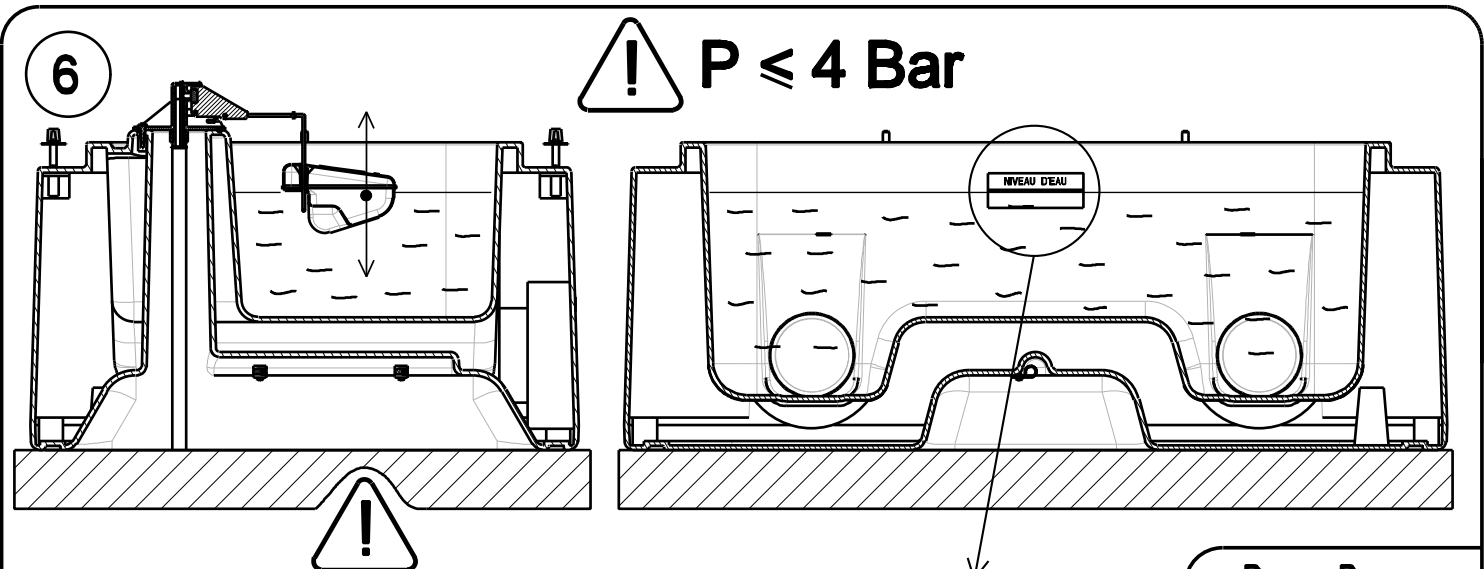
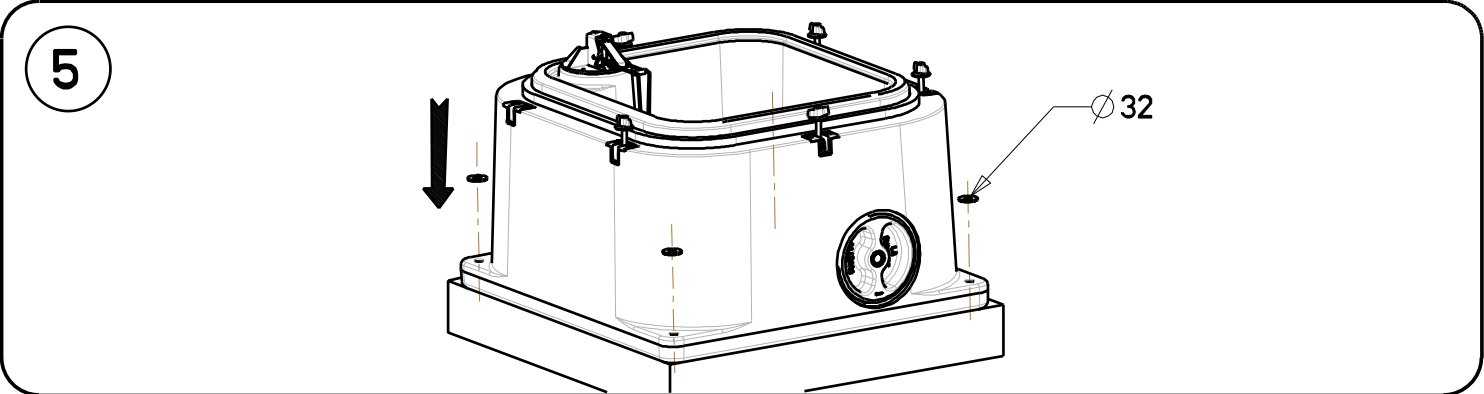
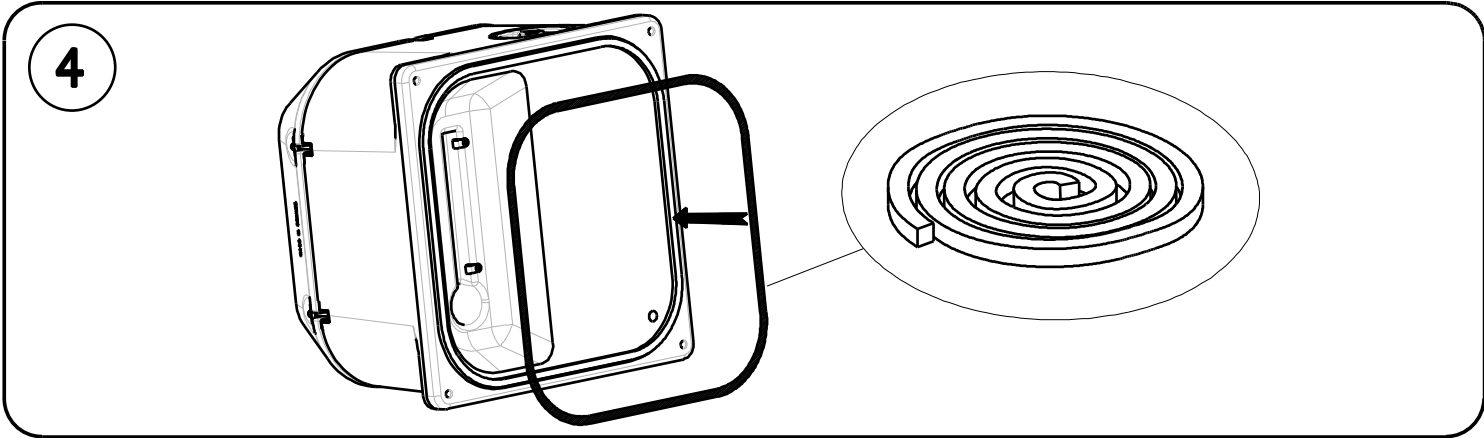
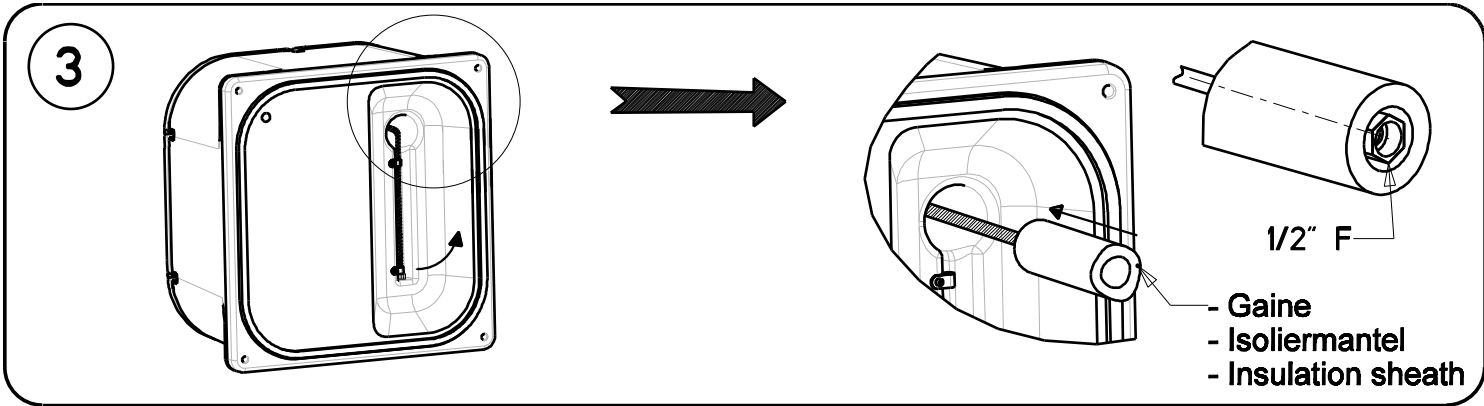
- Gaine
- Isoliermantel
- Insulation sheath

A-456

Tuyau polyéthylène semi-rigide = OBLIGATOIRE

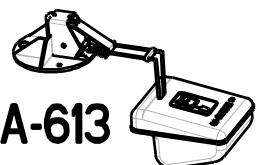
Halbstarres Polyäthylen Rohr = obligatorisch

Semi-rigid polyethylene pipe = mandatory



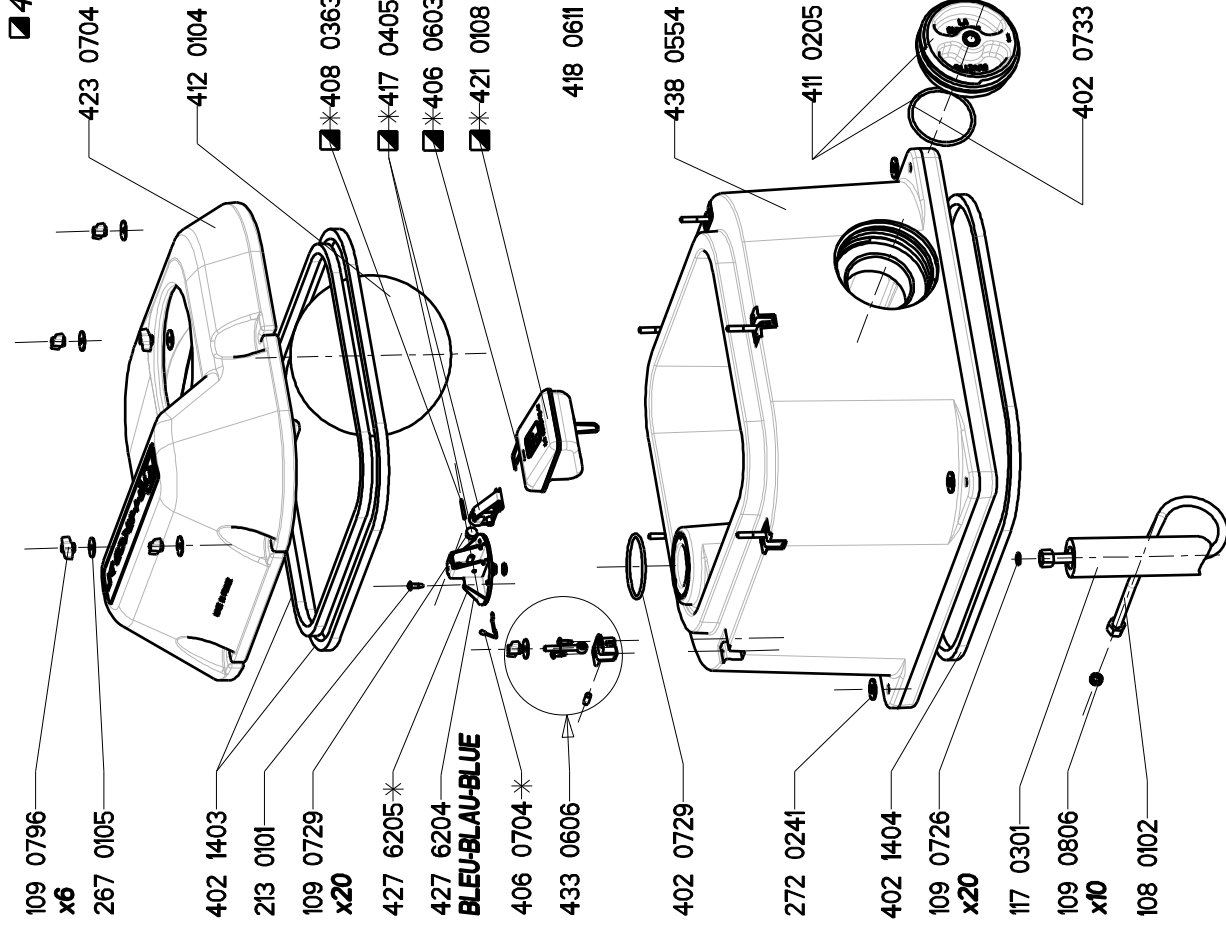
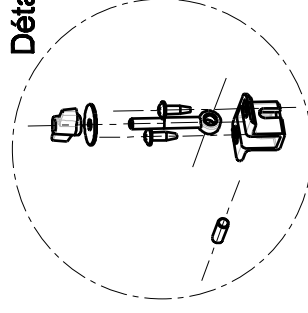
- Il est recommandé d'avoir un minimum de 5 bovins par Thermolac 40 et 10 bovins par Thermolac 75 afin d'avoir une résistance au gel optimale.
- For optimal frost-protection, we recommend to have at least 5 heads of cattle for 1 Thermolac 40 and at least 10 heads of cattle for 1 Thermolac 75.
- Für einen optimalen Frostschutz ist es empfehlenswert mind. 5 Rinder pro Thermolac 40 und mind. 10 Rinder pro Thermolac 75 zu halten.

- Basse Pressure
- Low Pressure
- Niederdruck



THERMOLAC 40 GV & 75 GV

Détail 433 0606



■ 411 0337

